

# POWER LINE

July 2026



## Redwood Electric Cooperative

60 Pine Street • Clements, Minnesota 56224

### Visit Redwood Electric Cooperative at Farmfest 2026

August 4-6 • Gilfillan Estate • Morgan, MN

**Booth #2201**

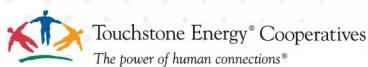
Members can enter the drawing to win one of the five EGO battery powered tools we are giving away! Make sure you cut the coupon below and stop by our booth for a chance to win. See you at Farmfest!



### FARMFEST 2026

AUGUST 4-6

28366 COUNTY HWY 13  
MORGAN, MN (GILFILLAN)



#### MEMEBER INFO:

Member Name: \_\_\_\_\_

Address: \_\_\_\_\_

Phone #: \_\_\_\_\_

Email: \_\_\_\_\_

# Important Meter Safety Notice

Members are not allowed to remove or pull electric meters.

If a meter is removed by a member or electrician without first notifying our office, charges will apply for a service call, including the cost of the lineman and truck. If the meter is removed after normal business hours, all applicable after-hours service fees will also be charged.

Please contact our office before any meter is removed to help ensure safety and avoid unnecessary service charges. When a meter is pulled, it will trigger an outage alert and dispatch our line crew to the location unnecessarily, thinking there is a power outage. This is also a serious safety concern.

***This will be enforced.***

Please also note:

- The cooperative is not responsible for issues caused by blown fuses or tripped breakers and calls for outages due to these issues will also result in charges.
- Always check your breakers and fuses before reporting an outage.
- If a licensed electrician is working on a meter, they must contact our office before any work is done so we can properly document and avoid unnecessary dispatches.



## DON'T MISS IMPORTANT UPDATES!

Please make sure **ALL YOUR CONTACT INFORMATION** is up to date so you don't miss important text message or email notifications.



**KEEP YOUR CELL PHONE NUMBER CURRENT**  
so you don't miss important text message alerts.



**KEEP YOUR EMAIL ADDRESS CURRENT**  
so you don't miss important email notifications.

### STAY INFORMED ABOUT:



Planned Outages




Billing Updates



And More!



**REC**  
Redwood Electric Cooperative

A Touchstone Energy® Cooperative 

*We're here for you—today and every day!*

## New Employee Kole Bartlett

Redwood Electric Cooperative is pleased to welcome Kole Bartlett to our line crew.

Kole is a 2022 graduate of Litchfield High School and continued his education at M State in Wadena, where he pursued training in the electrical line worker field. He joins Redwood Electric with experience working on both transmission and overhead distribution systems and is eager to learn more about the cooperative side of the industry while serving members across the service territory.

Kole's interest in becoming a line worker began by following in the footsteps of his older brother, Kaleb, who also works as a lineman. He is the son of Ray and Shannon Bartlett, and with his mother originally from the Morgan area, Kole is excited to work in a community where he has strong family ties and familiar connections. As he begins his career with Redwood Electric, Kole looks forward to meeting new people, building relationships with members, and expanding his knowledge of the electric cooperative industry.

Outside of work, Kole enjoys hunting, fishing, and spending time with family and friends. A dedicated outdoorsman, he fletches all of his own hunting arrows, combining craftsmanship with one of his favorite hobbies. He is also the proud owner of Duke, a yellow lab.

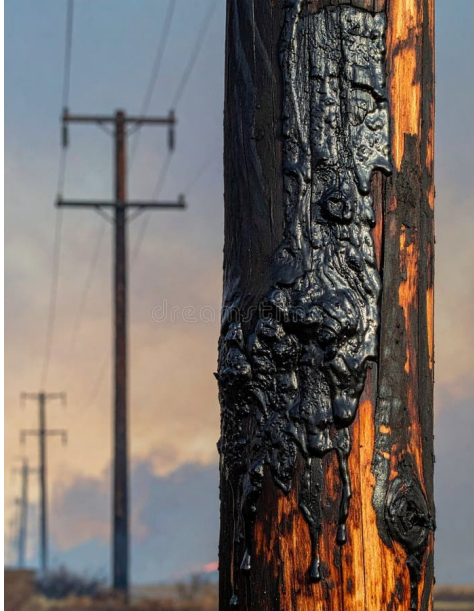
Please join us in welcoming Kole to Redwood Electric Cooperative. We are excited to have him on our team and look forward to the skills, dedication, and enthusiasm he brings to serving our members.



## Safety First: Burning Ditches and Electrical Poles

Ditch burning is often used in rural Minnesota to clean up weeds and dead vegetation, but it can be dangerous near electrical poles and power lines.

Fire and heat can weaken poles, damage equipment, and cause power outages—even if flames don't directly touch the line. It can also create serious safety hazards for the public and utility workers.



### Safe Burning Tips:

- Check local rules and burn permits before starting
- Notify your electric utility before burning
- Keep fire well away from poles, lines, and utility easements
- Watch wind conditions closely
- Have water or equipment ready in case fire spreads

Remember: heat alone can damage electrical equipment

### Important Reminder:

Never burn near power lines or poles. If a fire gets close to electrical equipment, stay away and call 911 and your utility right away.

Safe planning and communication help prevent outages and keep everyone safe.

## Office Hours & Contact Information

Monday-Friday 7:00 AM-3:30 PM  
Phone: 888-251-5100 or 507-692-2214

Email address:

office@redwoodelectric.com

Web: www.redwoodelectric.com

SmartHub: redwoodelectric.smarthub.coop

Pay By Phone: 844-905-2209

### OUTAGES

(888) 251-5100

24 HOURS A DAY

### \*CALL BEFORE YOU DIG\*

Gopher State One

Call (800) 252-1166 or 811

## General Manager

Jim Haler

## Board of Directors

Dan Tauer-President

Emily Evans-Vice President

Jill Weber VanDerWal-Secretary-Treasurer

Dean Fultz

Michael Baune

Dick Nelson

George W. Turbes

The Board meets the fourth Thursday of each month at  
Redwood Electric Cooperative's building at  
60 Pine St. Clements, MN 56224

### STATEMENT OF NON-DISCRIMINATION

Redwood Electric Cooperative is an equal opportunity provider and employer.



Visit our website