

POWER LINE

July 2024



Redwood Electric Cooperative
60 Pine Street • Clements, Minnesota 56224

MINNESOTA FARMFEST



Visit us along with other Touchstone Energy cooperatives at Farmfest! Bring the coupon below to booth #2301 for a chance to win one of five battery-powered EGO products!

FARMFEST 2024

AUGUST 6-8
28366 COUNTY HIGHWAY 13
MORGAN, MN (GILFILLAN)



*Bring this coupon to Farmfest booth #2301 for a chance to win one of 5 battery-powered EGO products!

MEMBER INFO:

REC Member Name: _____

Service Address: _____

Account #: _____

Phone #: _____

Email Address: _____

IF THERE IS A DOWNED POWER LINE **THINK BEFORE YOU ACT**

An overhead power line can become damaged or fall due to a severe storm, car accident, public damage or other reasons. If you see a downed power line, take these actions:



Consider all power lines energized and deadly.



Stay at least 50 feet away.



Call 9-1-1 or the utility to report the downed line.



Do not approach it or try to move it with another object.



Do not get out of a vehicle or cab.



Do not approach the scene.



Warn others to stay away.



Turn around and go another way.

Even if you do not see a downed line, realize one could be hidden by storm debris, water, snow or ice.

Other things to know



Energized downed lines spread voltage through the ground or nearby objects.



If you go near a downed line, you can become electricity's path to ground.



You cannot tell if a power line is live just by looking at it.



Even if a power line appears coated, it is never safe to go near it.

While transmitting and distributing power is typically safe, extreme scenarios like downed power lines are extremely dangerous. Never approach a downed power line.

JULY IS NATIONAL GRILLING MONTH!

Summer is here and July is National Grilling Month, so it's the perfect time to talk about energy savings by taking your cooking outside!

One of the easiest ways to save energy in the summer is to cook outdoors. Eliminating additional heat in the kitchen will give your cooling system a much-needed break.

Safety Tip

Only use a gas or charcoal grill outdoors. Grills are designed to be used outside where there is plenty of ventilation. Using one in a closed or partially enclosed space can cause carbon monoxide (CO) to build up and cause CO poisoning. Grill in the great outdoors.



Safe
Electricity.org®



IMPORTANT ANNOUNCEMENT

New Pay-by-Phone Number

1-844-905-2209

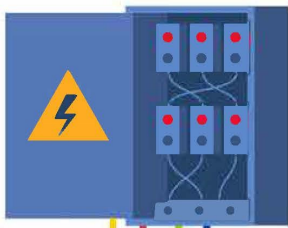
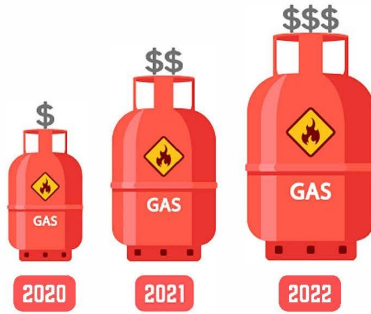


THE IMPACT OF RISING COSTS

219%

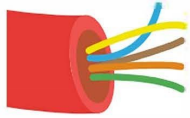
Since 2020, the cost of natural gas has increased by 219 percent, a primary fuel source used to generate electricity.

Source: eia.gov



Due to supply shortages, overhead and padmounted transformers have increased in cost by 61 percent. This equipment is critical to delivering electricity.

61%



Since the COVID-19 pandemic, underground and overhead wires have increased by 42 percent.

42%

33%

The cost of power poles has increased by 33 percent.

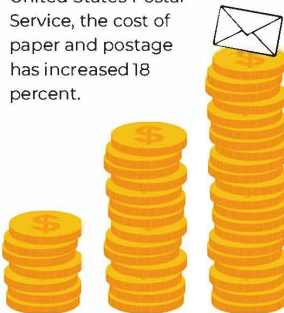


52%

The cost of vegetation management, including tree trimming, has increased by 52 percent.

18%

According to the United States Postal Service, the cost of paper and postage has increased 18 percent.



REC
Redwood Electric Cooperative

A Touchstone Energy® Cooperative

60 Pine St. Clements, MN 56224

(507) 692-2214

or

(888) 251-5100

(Toll free number & Outage number)

Pay-by-Phone #:

844-905-2209

Email address:

office@redwoodelectric.com

Web:

www.redwoodelectric.com

Office Hours:

7 a.m. to 3:30 p.m. Monday-Friday

Ron Horman, General Manager

Board of Directors

Daniel Tauer, President

Emily Evans, Vice President

Jill Weber VanDerWal, Secretary-Treasurer

Michael J, Baune, Director

Dean Fultz, Director

George Turbes, Director

Richard Nelson, Director

The Board meets the fourth Thursday of each month at Redwood Electric Cooperative's building at 60 Pine St. Clements, MN 56224

STATEMENT OF NON-DISCRIMINATION

Redwood Electric Cooperative is an equal opportunity provider and employer. If you wish to file a Civil Rights program complaint of discrimination, complete the [USDA Program Discrimination Complaint Form](http://www.ascr.usda.gov/complaint_filing_cust.html) found online at http://www.ascr.usda.gov/complaint_filing_cust.html, or at any USDA office, or call (866) 632-9992 to request the form. You may also write a letter containing all of the information requested in the form. Send your completed complaint form or letter by mail to:

U.S. Department of Agriculture, Director, Office of Adjudication, 1400 Independence Avenue, S.W., Washington, D.C. 20250-9410, by fax (202) 690-7442 or email at program.intake@usda.gov.



Visit our website