

# POWER LINE

June 2026



## Redwood Electric Cooperative

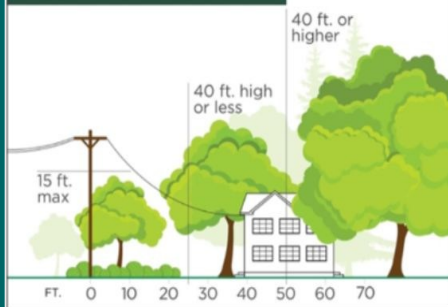
60 Pine Street • Clements, Minnesota 56224

# 3 WAYS TO HELP LIMIT TREE TRIMMING

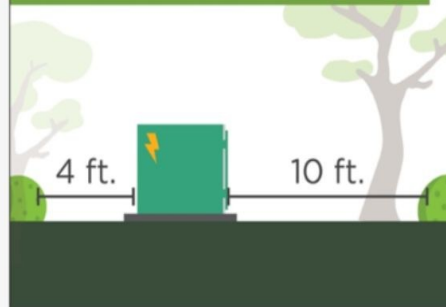
Did you know electric utilities are required to trim trees and other types of vegetation that grow too close to overhead power lines? We work with our members to ensure the best trimming options for the cooperative and our members.

**Here's how you can help:**

### PLANT TREES IN THE RIGHT PLACE.



### KEEP TRANSFORMERS CLEAR FROM VEGETATION.



### REPORT DANGEROUS TREES AND BRANCHES.



**Trimming improves safety for all.**

**Let's work together to enjoy the beauty of trees and reliable electricity.**



Our office will be closed

Friday, July 3rd!

For outages call 1-888-251-5100

Line crews will be available 24/7.

# POWER LINES ARE NOT **SOMETHING TO RISK.**

What you do in the moments after contacting a power line or pole could be the difference between walking away safely and sustaining a life-threatening injury.



**MOST TIMES, IT IS NOT CLEAR**  
if power is flowing through the metal of your vehicle  
or the ground around you.



**ALWAYS ASSUME  
THEY ARE ENERGIZED.**

## IF YOUR VEHICLE CONTACTS A POWER LINE:



**STAY INSIDE THE VEHICLE**  
whenever possible.



**CALL 911 IMMEDIATELY.**



**WARN OTHERS**  
to stay away.



**DO NOT TOUCH**  
the vehicle and the ground  
at the same time.



Electricity can travel through the vehicle  
and the ground. The area around the vehicle  
may be energized.

**STAY FAR AWAY**  
at least 35 feet (10 meters)

## IF YOU MUST EXIT DUE TO FIRE OR ANOTHER IMMEDIATE DANGER:

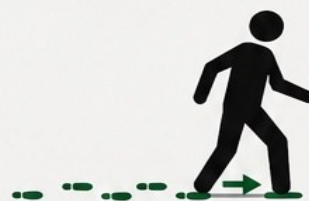
**1 JUMP CLEAR**  
with both feet  
together.



**2 DO NOT TOUCH**  
the vehicle and  
ground at the  
same time.



**3 SHUFFLE AWAY**  
with small steps,  
keeping both feet  
close together.



**WHY SHUFFLE?**  
Large steps can  
create voltage  
difference between  
your feet.



**STAY SAFE. STAY AWAY.**



**ALWAYS TREAT DOWNED  
POWER LINES AS ENERGIZED  
AND EXTREMELY DANGEROUS.**

**⚡ RESPECT THE POWER. PROTECT YOUR LIFE.**



Pictured Above: Lucan Fireman Dave Ourada and Joe Plaetz

## LUCAN FIRE DEPARTMENT



The Lucan Fire Department has been awarded a \$1,000 Operation Round-Up Grant to help with costs associated with the construction of their new training/meeting building.

The Lucan Area Fire Department serves the City of Lucan and the surrounding Granite Rock and Johnsonville townships in Redwood County. This volunteer-staffed organization operates from a single station in Lucan and provides emergency response, fire protection, and public safety services to residents and rural areas.

We'd also like to extend a heartfelt thank you to the volunteer firefighters of the Lucan Fire Department. Your commitment and selfless service to our communities do not go unnoticed—we are incredibly grateful for your dedication.



### Operation Round-Up is about Giving Back to Our Communities

Redwood Electric's Operation Round Up Trust Board proudly awarded nearly \$18,000 this past year to support local non-profit organizations and graduating seniors pursuing higher education!

These non-profit grants help strengthen the communities we serve by supporting non-profits *that make* a direct impact in and around our service territory—directly benefiting our members and their families. In addition, scholarships were awarded to member dependents continuing their education at colleges and trade schools, helping invest in the future of our communities.

### Small Change with a BIG Impact is the best way to describe Operation Round-Up

Through Redwood Electric Cooperative's Operation Round Up program, members simply "round up" their electric bill to the next dollar—contributing as little as a penny and never more than 99 cents each month. On average, members contribute less than **\$6 per year**, yet together, those small contributions make a powerful difference.

This program continues the neighbor-helping-neighbor spirit that electric cooperatives were built on more than 90 years ago. Redwood Electric's Board of Directors ensures fair representation by selecting members from each of the seven districts to serve on the Trust Board. This group meets twice a year to review applications and award funds—grant funding is done in the fall and student scholarships in the spring.

## Cogeneration Notice

In compliance with Redwood Electric Cooperative's adopted rules relating to cogeneration and small power production, Redwood Electric Cooperative is obligated to interconnect with and purchase electricity from congenators and small power producers, whom satisfy the conditions as a quality facility.

Redwood Electric is obligated to provide information free of charge to all interested members upon request regarding rates and interconnections requirements. All interconnections require an application and approval to become qualifying facility.

Any dispute over interconnections, sales, and purchases are subject to resolution by the Redwood Electric Cooperative Board. Interested members should contact Redwood Electric Cooperative. All Redwood Electric cogeneration information is located on our website in our

NOVA portal.

# Rhubarb Cake Dessert

## Ingredients:

- 1 pkg. yellow cake mix
- 1 cup sugar
- 4 cups rhubarb, diced
- 2 cups half and half



## Directions:

Prepare cake mix as directed on package and pour into a greased 9x13 pan. Mix sugar and rhubarb together. Spoon evenly over cake batter. Pour half and half over top of rhubarb mixture. Bake at 350 degrees for 40-45 minutes. This is like an upside-down cake with custard on the bottom of the cake.

## Office Hours & Contact Information

Monday-Friday 7:00 AM-3:30 PM  
Phone: 888-251-5100 or 507-692-2214  
Email address:  
office@redwoodelectric.com  
Web: www.redwoodelectric.com  
SmartHub: redwoodelectric.smarthub.coop  
Pay By Phone: 844-905-2209

**OUTAGES**  
**(888) 251-5100**  
**24 HOURS A DAY**

**\*CALL BEFORE YOU DIG\***  
**Gopher State One**  
Call (800) 252-1166 or 811

## General Manager

Jim Haler

## Board of Directors

Dan Tauer-President  
Emily Evans-Vice President  
Jill Weber VanDerWal-Secretary-Treasurer  
Dean Fultz  
Michael Baune  
Dick Nelson  
George W. Turbes

The Board meets the fourth Thursday of each month at  
Redwood Electric Cooperative's building at  
60 Pine St. Clements, MN 56224

## STATEMENT OF NON-DISCRIMINATION

Redwood Electric Cooperative is an equal  
opportunity provider and employer.



Visit our website

## MEMBER ALERT

# PHONE SCAM WARNING



Scammers are calling from a number that appears to be from the Lindstrom, MN area and providing a different callback number.



They may claim your account is past due and demand immediate payment to avoid disconnection.



### PLEASE REMEMBER:



We do NOT require immediate payment over the phone to prevent disconnection.



We only accept payments through our secure, approved payment options.



We do NOT disconnect service after normal business hours.



If you receive a suspicious call, text, or email claiming to be from Redwood Electric, do not provide personal or payment information.



Instead, hang up and contact our office directly so we can assist you and report the incident.



Redwood Electric Cooperative

A Touchstone Energy® Cooperative

