

# POWER LINE

April 2026



## Redwood Electric Cooperative

60 Pine Street • Clements, Minnesota 56224

# HAPPY LINEMAN APPRECIATION DAY



Every year, we take time to recognize the extraordinary linemen who dedicate their lives to keeping the lights on in our communities. At Redwood Electric, six linemen maintain over 1,300 miles of line—work that is essential to everything we do.

While it takes our entire team to keep the cooperative running smoothly, on April 13th, we proudly honor the men who face dangerous and challenging conditions so our lives can be brighter and safer. Whether it's day or night, weekday or weekend, when the power goes out, they go out.

You've likely seen them working in howling winds, heavy rain, or freezing conditions—doing whatever it takes to restore power. Beyond serving our local members, they are always ready to lend a hand to neighboring communities in times of need.

Our linemen are brave, committed, and vital to our success. Please join us in thanking them—not just today, but every day. Remember, your power works because they do!

## MEMORIAL DAY

HONORING ALL WHO SERVED



Our office will be closed  
Monday, May 25,  
in observance of Memorial Day.  
We wish everyone a safe and  
meaningful holiday.

# REDWOOD ELECTRIC COOPERATIVE

60 PINE STREET- CLEMENTS, MINNESOTA 56224

## FINANCIAL REPORT

December 31, 2025 and 2024

### Balance Sheet

#### ASSETS AND OTHER DEBITS

	<u>2025</u>	<u>2024</u>
<b>ELECTRIC PLANT</b>		
In Service	\$50,350,403	\$49,268,178
Under construction	253,453	413,553
Total electric plant	50,603,856	49,681,731
Less accumulated depreciation	20,039,299	19,048,872
Electric plant - net	30,564,557	30,632,859
<b>OTHER PROPERTY AND INVESTMENTS</b>		
Total other property and investments	7,485,252	6,836,755
<b>CURRENT ASSETS</b>		
Cash and cash equivalents	80,043	375,021
Accounts receivable, net of allowance for uncollectibles	3,784,891	2,537,099
Material and supplies	1,269,203	1,116,151
Prepayments	216,667	193,700
Interest receivable	3,873	3,925
Total current assets	5,354,677	4,225,896
<b>DEFERRED DEBITS</b>	23,100	0
<b>TOTAL ASSETS</b>	<u><u>\$43,427,586</u></u>	<u><u>\$41,695,510</u></u>

#### LIABILITIES AND OTHER CREDITS

<b>EQUITIES</b>		
Patronage capital	\$19,349,010	\$17,845,292
Other Equities	572,012	517,880
Total equities	19,921,022	18,363,172
<b>LONG-TERM LIABILITIES</b>	18,874,544	19,953,115
<b>CURRENT LIABILITIES</b>		
Current Maturities of Long-Term Debt	1,108,224	1,045,243
Notes & Accounts payable	2,706,173	1,365,357
Customer deposits	50,000	45,650
Other current liabilities	473,584	636,208
Total current liabilities	4,337,981	3,092,458
<b>DEFERRED CREDITS</b>	294,039	286,765
<b>TOTAL EQUITIES AND LIABILITIES</b>	<u><u>\$43,427,586</u></u>	<u><u>\$41,695,510</u></u>

### Statement of Operations

	<u>2025</u>	<u>2024</u>
<b>OPERATING REVENUES</b>		
Electric	\$17,187,915	\$15,982,641
Other	114,507	95,076
Total operating revenue	17,302,422	16,077,717
<b>OPERATING EXPENSES</b>		
Cost of power	10,734,475	9,642,540
Distribution - operation	863,173	1,021,191
Distribution - maintenance	891,597	747,015
Customer accounts	363,005	331,292
Customer service and information	363,093	300,168
Administrative and general	1,056,647	1,063,372
Depreciation	1,543,009	1,540,460
Interest on long-term debt	511,665	539,125
Interest - other	9,031	4,909
Total operating expenses	16,335,695	15,190,072
<b>OPERATING MARGIN BEFORE CAPITAL CREDITS GENERATION AND TRANSMISSION AND OTHER</b>	966,727	887,645
<b>COOPERATIVE CAPITAL CREDITS</b>	767,131	425,616
<b>NET OPERATING MARGIN</b>	1,733,858	1,313,261
<b>NONOPERATING MARGIN (LOSS)</b>	79,801	63,031
<b>NET MARGIN</b>	<u><u>\$1,813,659.00</u></u>	<u><u>\$1,376,292.00</u></u>
<b>PATRONAGE CAPITAL - BEGINNING OF YEAR</b>	17,845,292	16,970,933
<b>RETIREMENT OF CAPITAL CREDITS</b>	(309,940)	(501,933)
<b>PATRONAGE CAPITAL - END OF YEAR</b>	<u><u>\$19,349,011</u></u>	<u><u>\$17,845,292</u></u>

# OPERATION ROUND-UP



Pictured Above: Morgan Fireman Justin Blomeke

## MORGAN RURAL FIRE ASSOCIATION



The Morgan Rural Fire Association has been awarded a \$1,000 Operation Round-Up Grant to help purchase a newer fire truck.

The department serves families and businesses in the City of Morgan, as well as rural areas surrounding Sleepy Eye, Evan, Redwood Falls, Springfield, and Clements. They also provide mutual aid support to neighboring communities when needed.

Staffed by more than 20 dedicated volunteer firefighters, the Morgan Rural Fire Association plays a critical role in responding to fires and emergencies throughout Redwood Electric Cooperative's service territory.

We'd also like to extend a heartfelt thank you to the volunteer firefighters of the Clements Fire Department. Your commitment and selfless service to our communities do not go unnoticed—we are incredibly grateful for your dedication.

### Operation Round-Up is about Giving Back to Our Communities

Redwood Electric's Operation Round Up Trust Board proudly awarded nearly \$18,000 this past year to support local non-profit organizations and graduating seniors pursuing higher education!

These non-profit grants help strengthen the communities we serve by supporting non-profits that make a direct impact in and around our service territory—directly benefiting our members and their families.

In addition, scholarships were awarded to member dependents continuing their education at colleges and trade schools, helping invest in the future of our communities.

### Small Change with a BIG Impact is the best way to describe Operation Round-Up

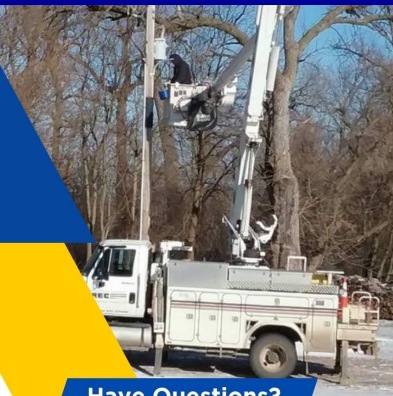
Through Redwood Electric Cooperative's Operation Round Up program, members simply "round up" their electric bill to the next dollar—contributing as little as a penny and never more than 99 cents each month. On average, members contribute less than **\$6 per year**, yet together, those small contributions make a powerful difference.

This program continues the neighbor-helping-neighbor spirit that electric cooperatives were built on more than 90 years ago. Redwood Electric's Board of Directors ensures fair representation by selecting members from each of the seven districts to serve on the Trust Board. This group meets twice a year to review applications and award funds—grant funding is done in the fall and student scholarships in the spring.



# 2026

## Annual Equipment Maintenance



Our linemen are out and about doing annual equipment maintenance. So, you might see them in your area or even in your yard. We do ask that you be cautious and slow down if you see a REC truck pulled over on the side of the road or ditch. They are working hard to make sure our equipment, lines, and poles are maintained and are working properly. Thank you!

Have Questions?

507-692-2214  
888-251-5100

Call our office if you have any questions or concerns!

# SCAM ALERT

### BE AWARE:

Legitimate Redwood Electric employees will NEVER:

- Demand immediate payment over the phone
- Demand that payment be made by using a provided barcode, by putting money onto a gift card, or by going to Walmart.
- Ask for banking or credit card information over the phone, email, or by text.
- Threaten to disconnect service without notice

### If you receive a suspicious call:

- Hang up immediately
- Call our official number: (888) 251-5100 or (507) 692-2214
- Report the incident to local authorities

**REC does NOT disconnect service on Holidays, Weekends, the day before a holiday, or on Fridays.**

Redwood Electric Cooperative has been made aware of a recent phone scam in our area. Scammers are posing as Redwood Electric employees and threatening immediate disconnection of service unless payment is made. They are also requesting payment by scanning a barcode they provide at a local Walmart. If you ever have questions, CALL OUR OFFICE!

### PLEASE BE AWARE:

Redwood Electric will never demand immediate payment over the phone to avoid disconnection.

We do not call or send automated messages on holidays. We will never request personal or banking information via phone, email, or text.

### SAFE PAYMENT OPTIONS:

Redwood Electric only accepts credit or debit card payments through our secure Pay-By-Phone system or SmartHub. In our office, we accept cash, checks, money orders, and cashier's checks.

## Office Hours & Contact Information

Monday-Friday 7:00 AM-3:30 PM  
Phone: 888-251-5100 or 507-692-2214

Email address:

office@redwoodelectric.com

Web: www.redwoodelectric.com

SmartHub: redwoodelectric.smarthub.coop

Pay By Phone: 844-905-2209

### OUTAGES

(888) 251-5100

24 HOURS A DAY

### \*CALL BEFORE YOU DIG\*

Gopher State One

Call (800) 252-1166 or 811

## General Manager

Jim Haler

## Board of Directors

Dan Tauer-President

Emily Evans-Vice President

Jill Weber VanDerWal-Secretary-Treasurer

Dean Fultz

Michael Baune

Dick Nelson

George W. Turbes

The Board meets the fourth Thursday of each month at Redwood Electric Cooperative's building at 60 Pine St. Clements, MN 56224

### STATEMENT OF NON-DISCRIMINATION

Redwood Electric Cooperative is an equal opportunity provider and employer.



Visit our website